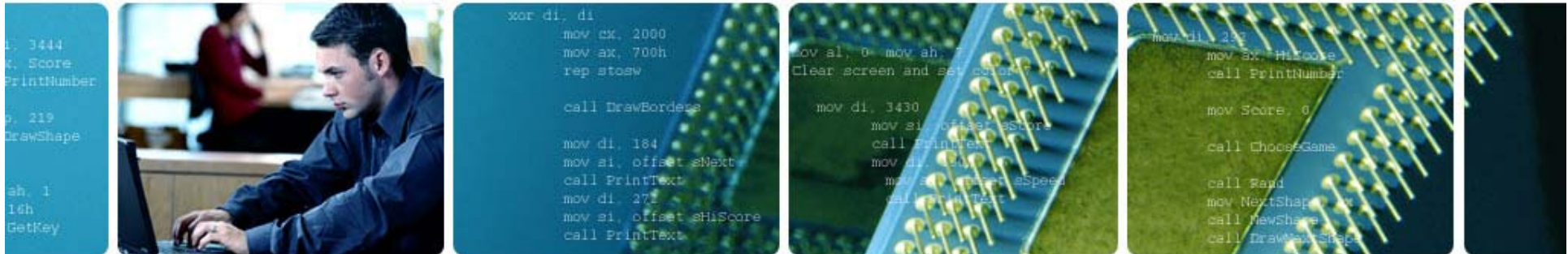




Introduction to the new mainframe

Chapter 12 - Network Communications on z/OS

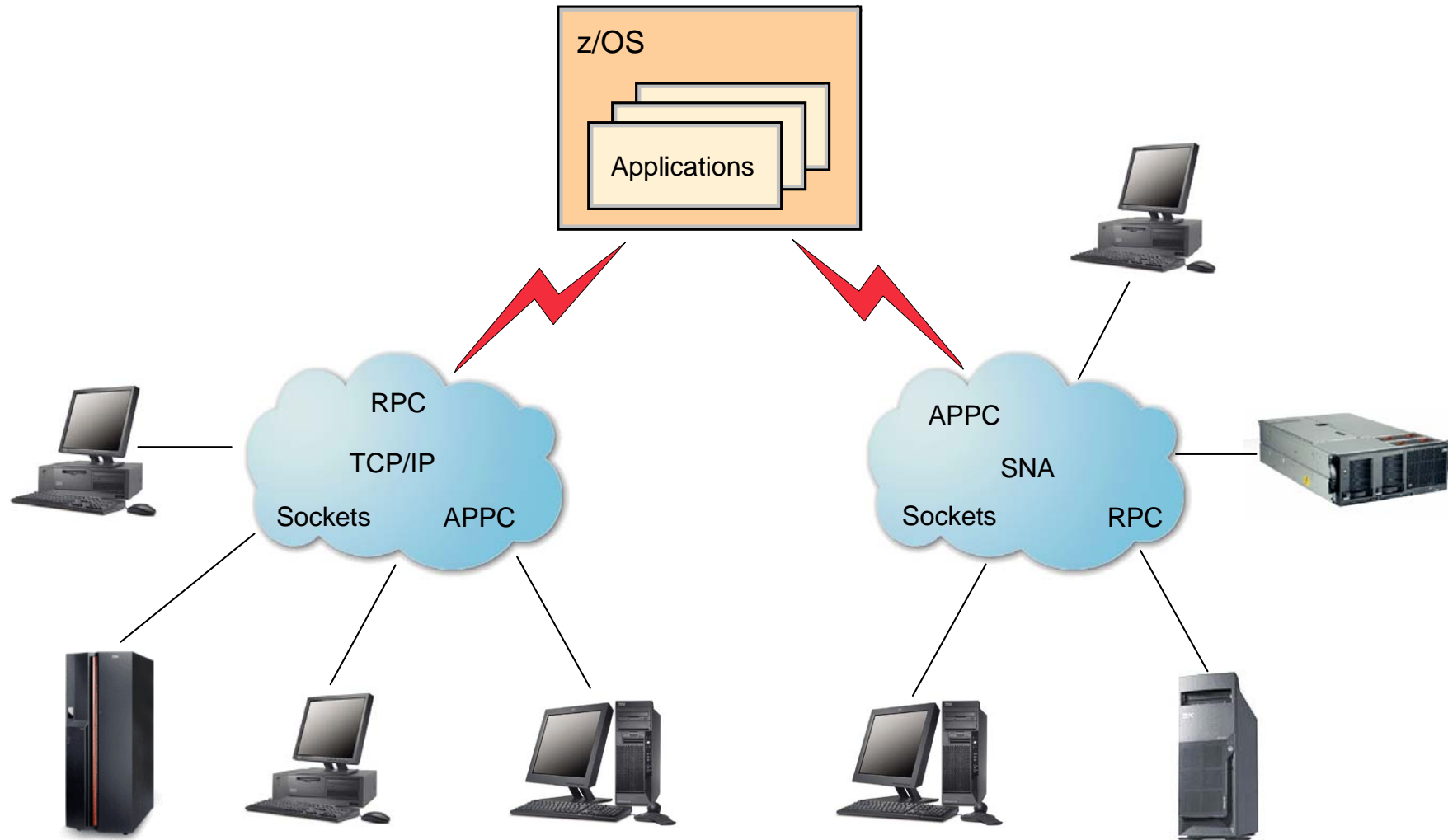


Objectives

In this chapter, you will learn:

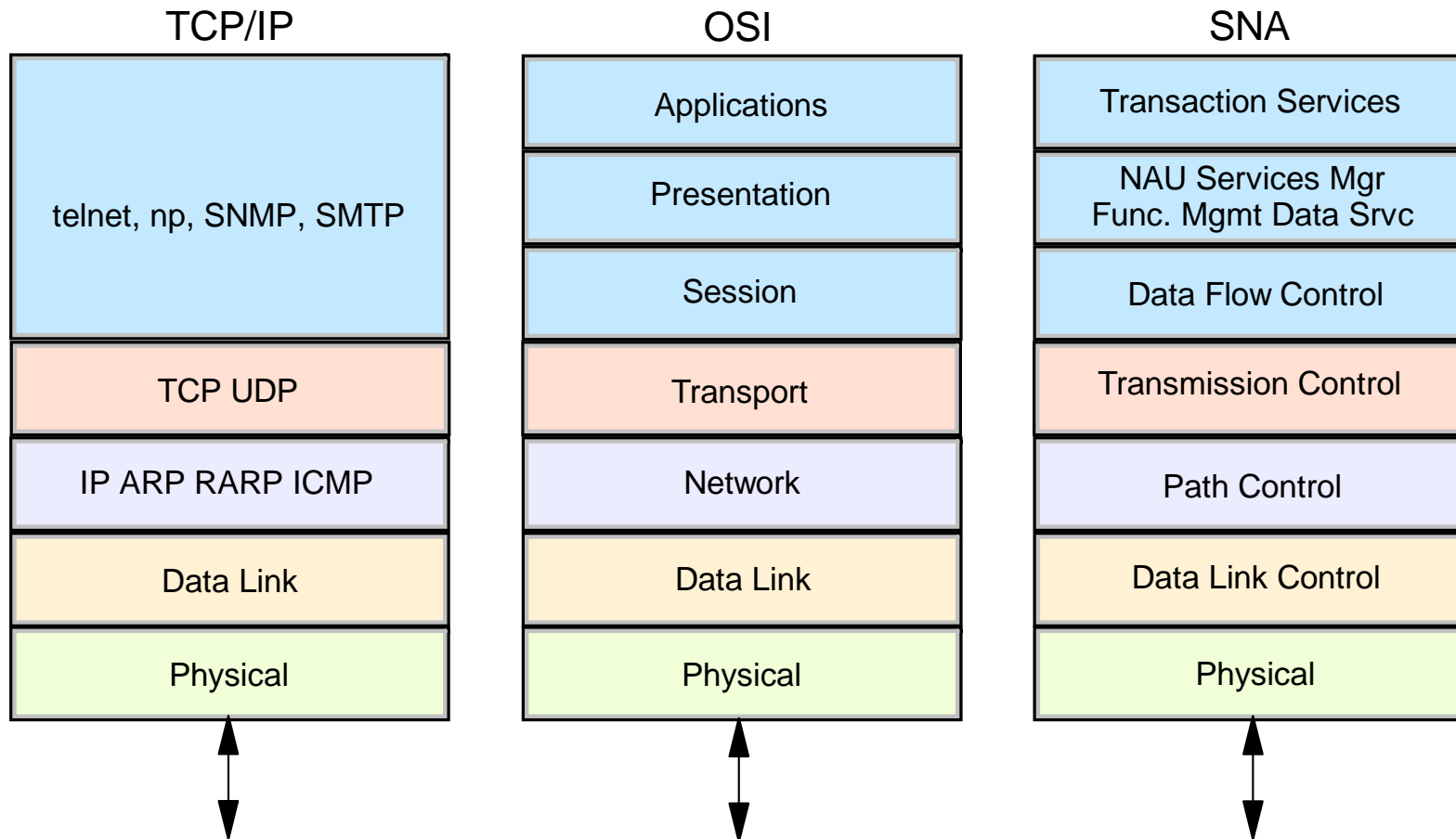
- An overview of the communication network model layers
- The software components of the z/OS Communications Server product
- The difference between a VTAM subarea and APPN network topology
- How the IP network can be used to transport data between SNA applications.
- Commonly used TCP/IP and VTAM commands

IBM Communications Server

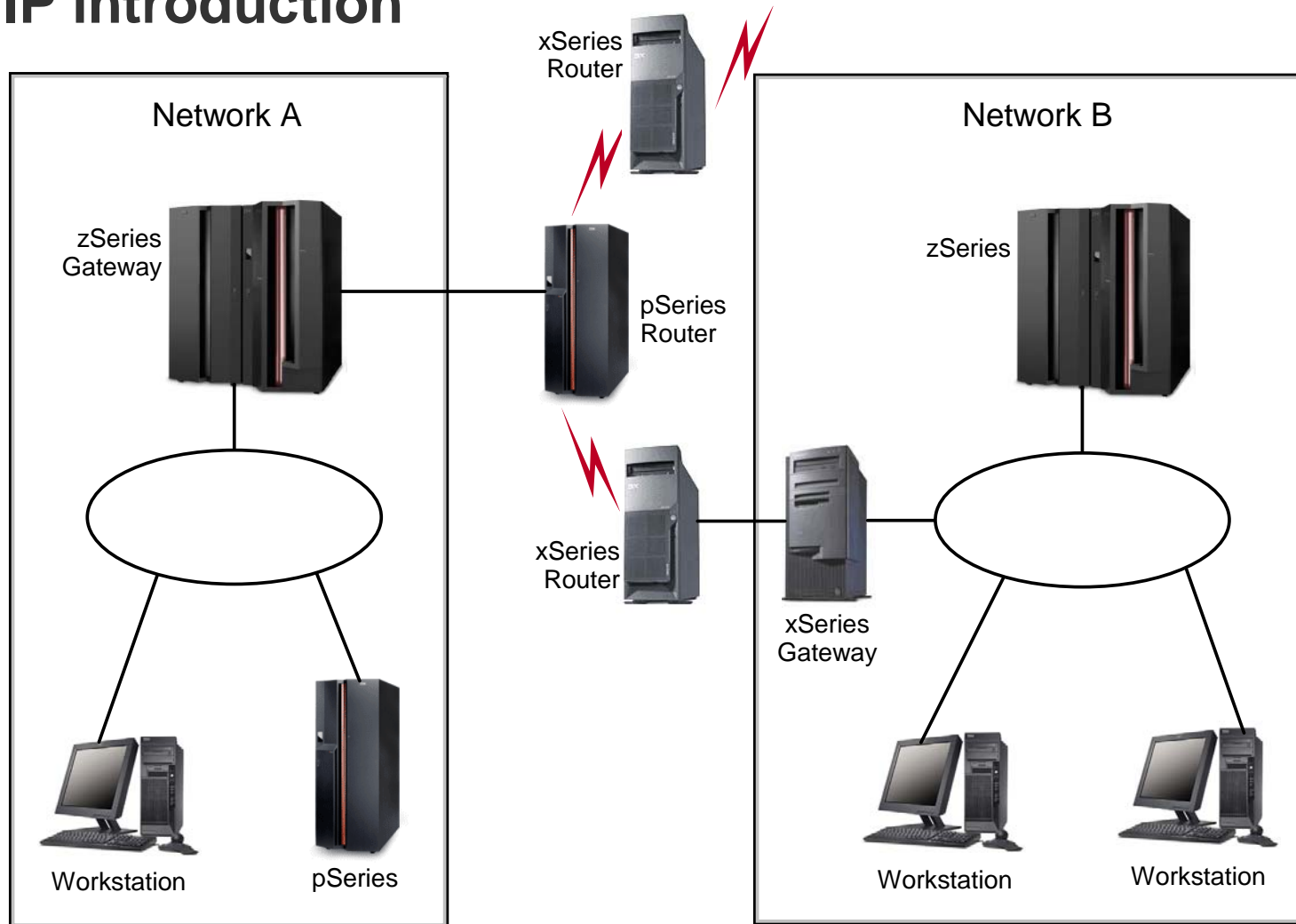


Open Systems Interconnect (OSI) network model

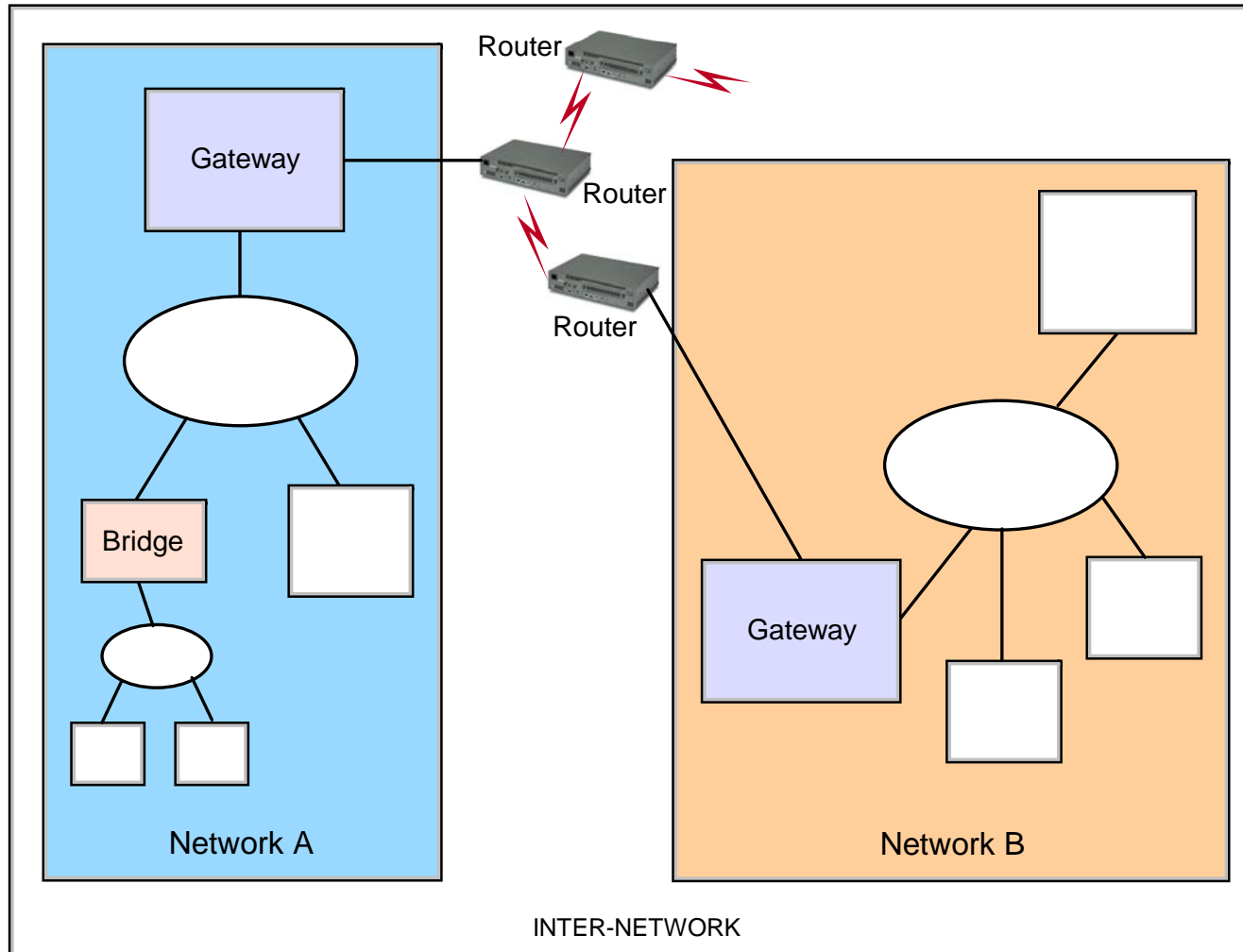
Layered Network Models



TCP/IP introduction

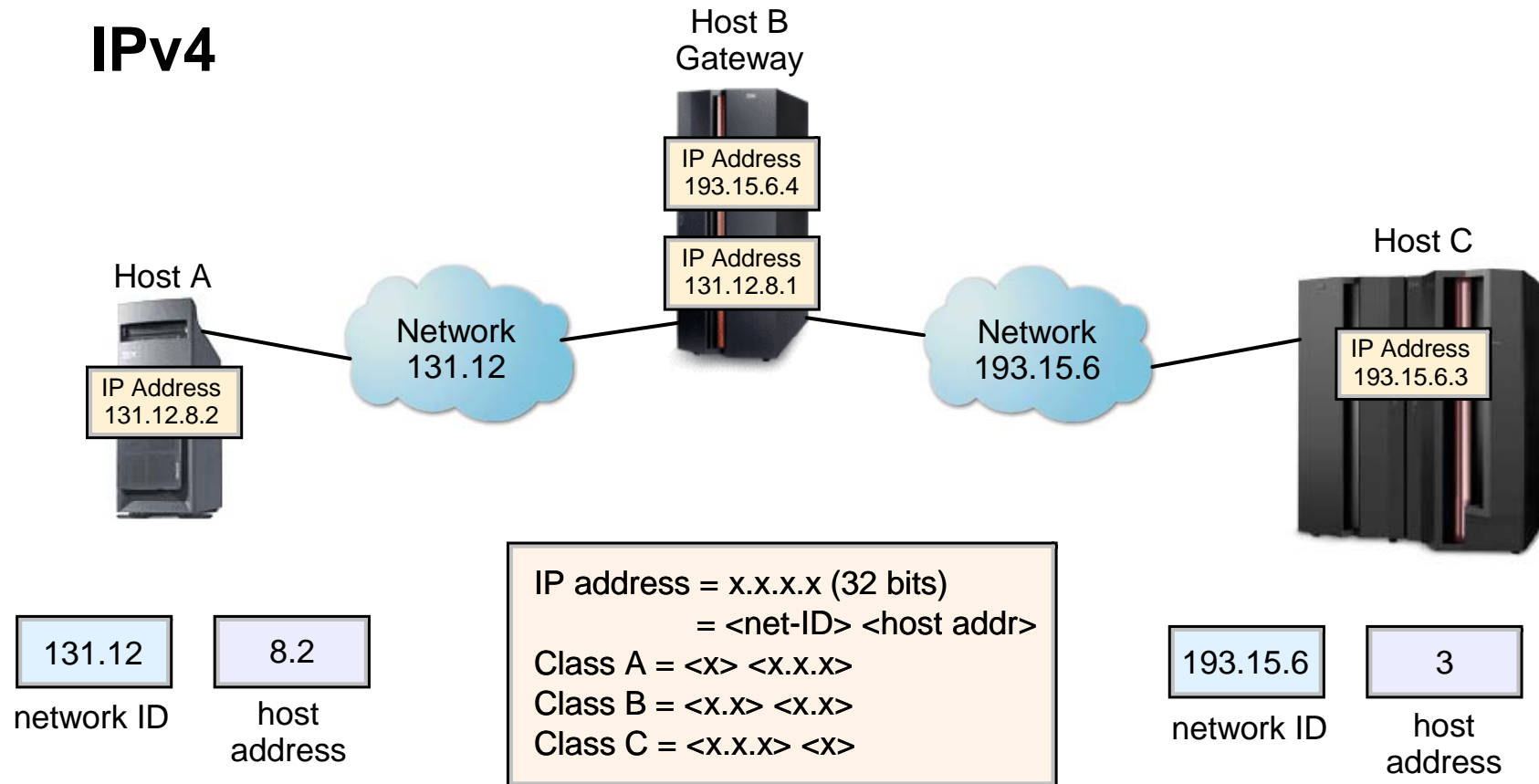


Interconnecting TCP/IP networks



Internet addressing

IPv4



TCP/IP commands

TCP/IP Commands can be entered

- TSO ready prompt
- ISPF Command Shell
- Prefixing the command with TSO on any ISPF command line.

`NETSTAT`

`PING`

`TRACERTE`

`NSLOOKUP`

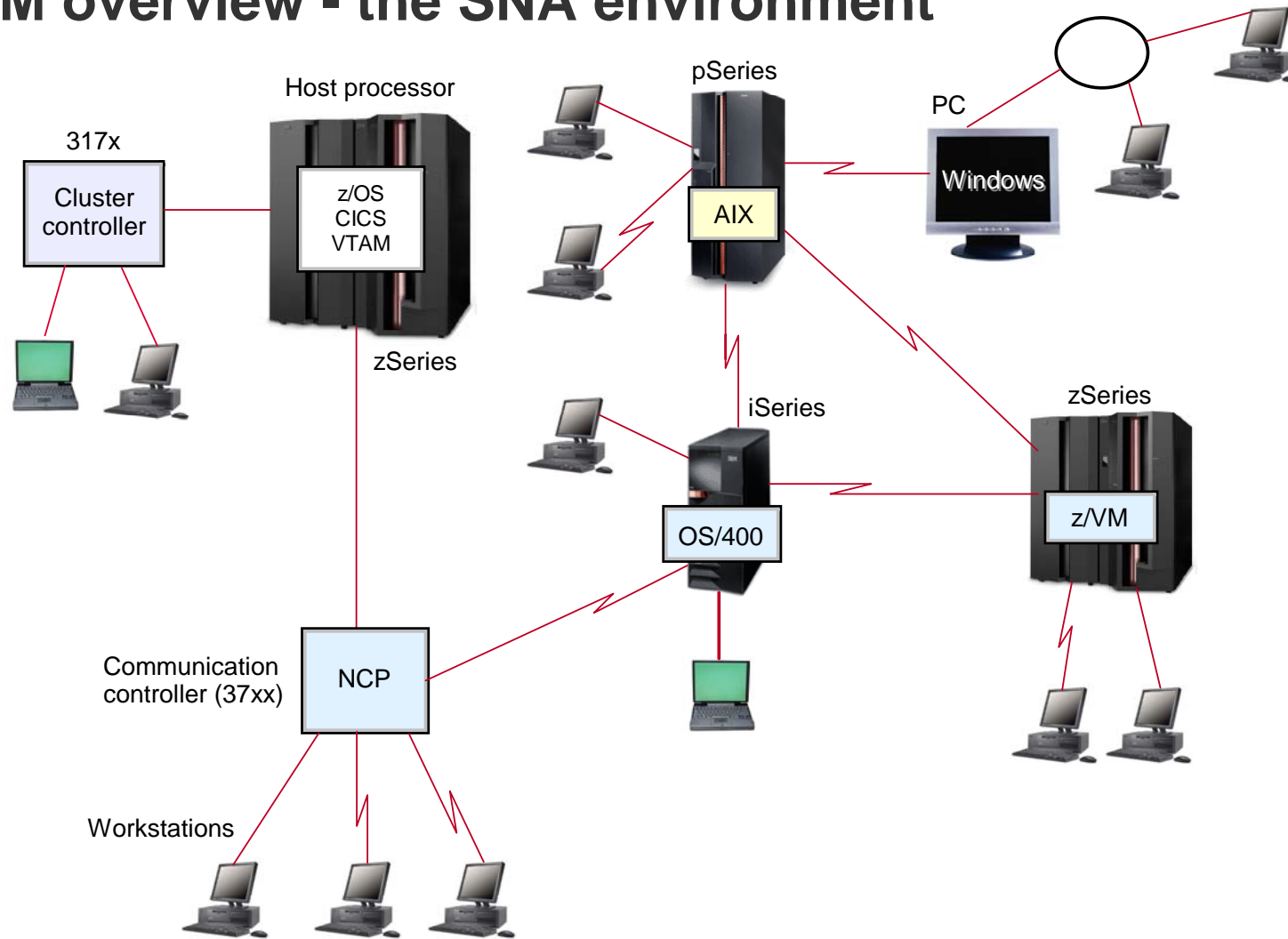
`TELNET`

`FTP`

- z/OS UNIX shell prompt (prefix “o”=command)

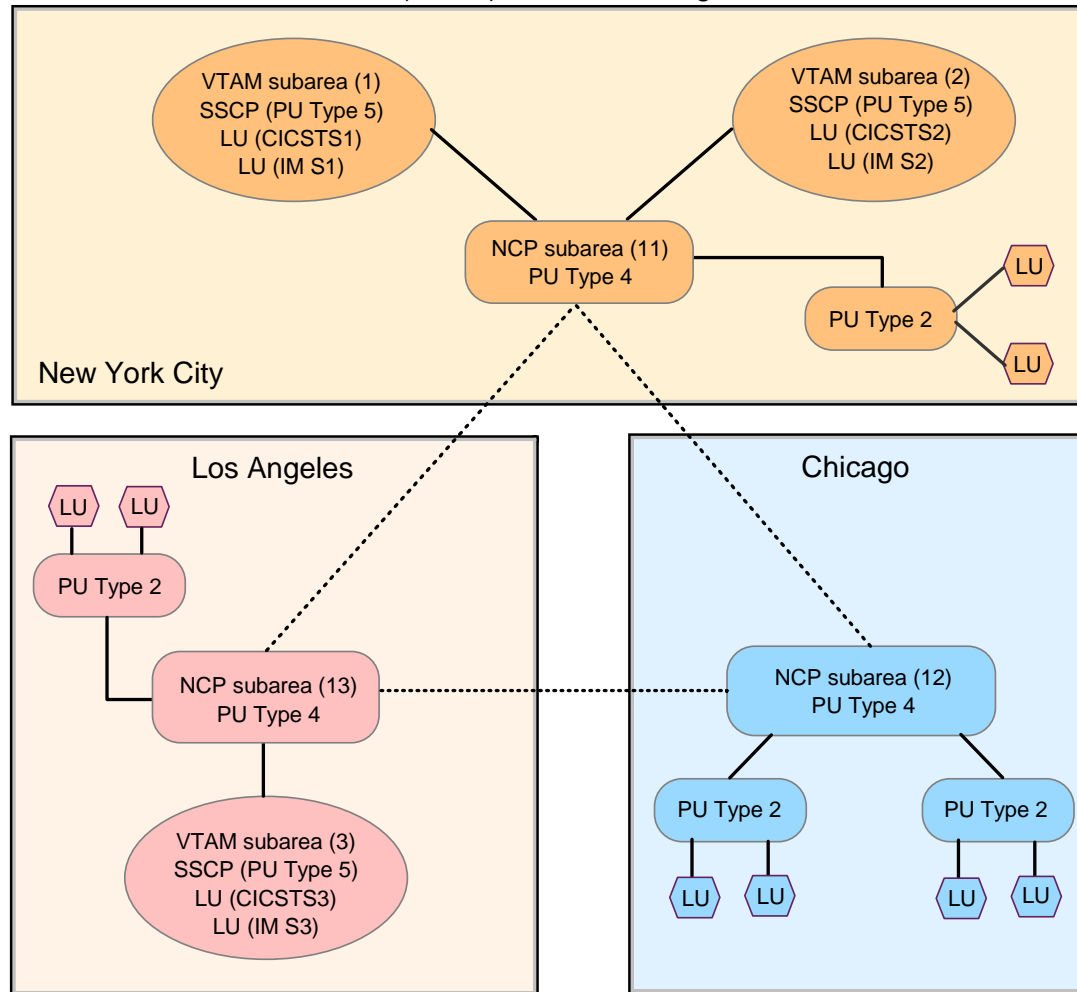
`onetstat`

VTAM overview - the SNA environment

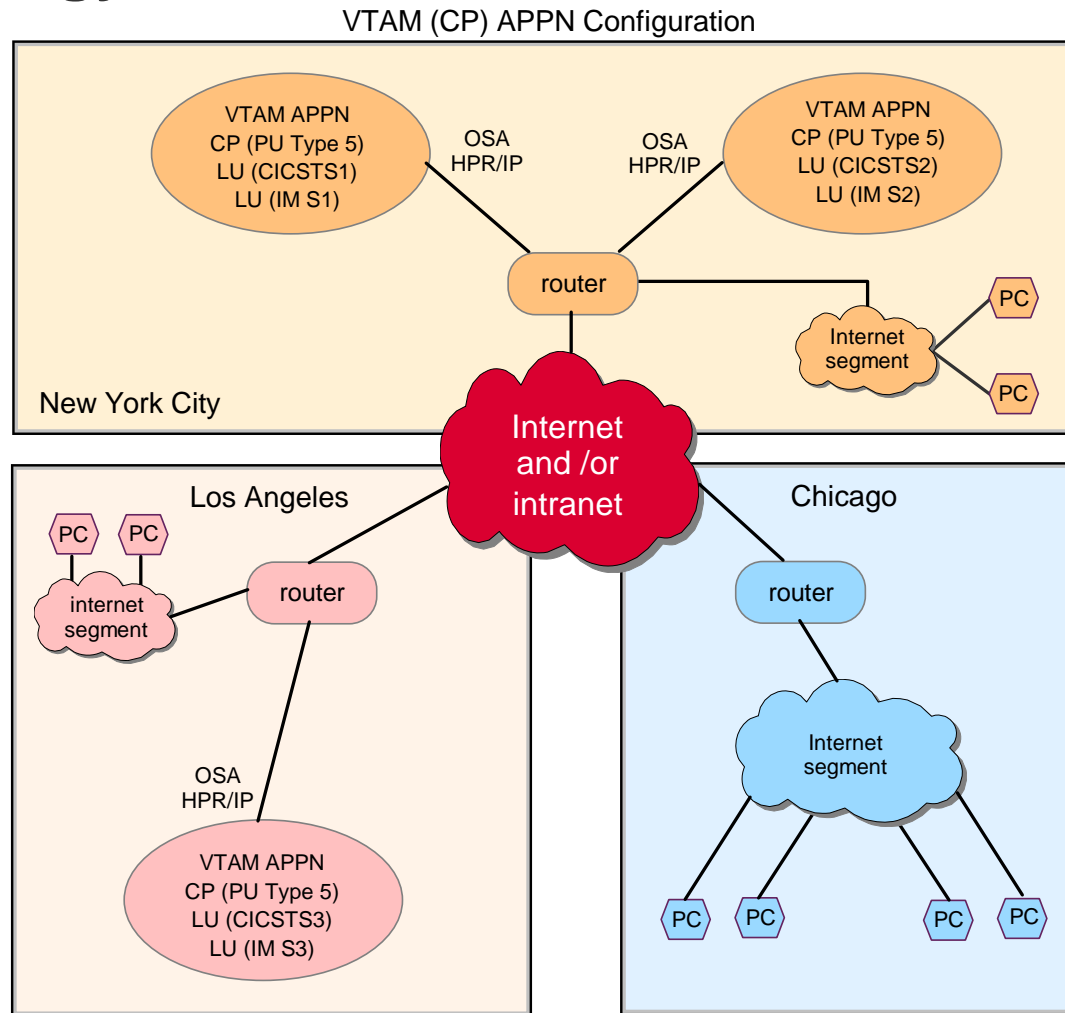


A pure VTAM subarea network

VTAM (SSCP) Subarea Configuration



APPN topology



Common VTAM commands

- Displays VTAM startup options.
`D NET,VTAMOPTS`
- Displays communication storage usage.
`D NET,CSM[,OWNERID=ALL]`
- Displays status of defined applications (ACBs).
`D NET,APPLS`
- Displays status of VTAM activated ATCCONxx members.
`D NET,MAJNODES`
- Displays APPN topology information.
`D NET,TOPO,LIST=SUMMARY`
- Displays status of APPN CP-CP sessions.
`D NET,CPCP`
- Displays status of subarea SSCP-SSCP sessions.
`D NET,SESSIONS`
- Displays status of subarea cross domain resource managers.
`D NET,CDRMS`
- Displays status of VTAM exit points.
`D NET,EXIT`

Summary

In this chapter, you have learned:

- **An overview of the communication network model layers**
- **Software components of the z/OS Communications Server product**
- **The difference between a VTAM subarea and APPN network topology**
- **How the IP network can be used to transport data between SNA applications.**
- **Commonly used TCP/IP and VTAM commands**